

OmniReach® FTTX Solutions

"Hub in a Pedestal" Fiber Distribution Hub



ADC KRONE's OmniReach® FTTX Solutions are the industry's first infrastructure solutions designed from the ground up to meet the unique requirements of FTTX networks. Designed for operational efficiency and scalability, OmniReach solutions simplify FTTX network installation, maintenance and management from the central office/headend to the outside plant.

Unlike traditional outdoor hubs which are typically deployed for neighborhoods of 144 homes or higher, the "hub in a pedestal" is right-sized for smaller application areas with 12 to 96 homes. Additionally, this unit is enclosed in a pedestal rather than in a metal cabinet and can be placed in the ground without pouring a concrete pad or installing a hand hole. This speeds deployment of fiber to the home and reduces overall project costs.

Modeled after ADC KRONE's industry leading FDH 3000, the "hub in a pedestal" incorporates many of the same patented design features widely recognized and accepted by technicians including plug and play splitter modules, parking lot storage and a swing frame. This new product offering features full-size trays for splicing incoming feeder and outgoing distribution cables and the option of adding hardened drop connections directly from the pedestal, further supporting lower cost business models. With an efficient routing and cable management system, the hub in a pedestal meets the challenges of any low count outside plant network.

Benefits

- Right-sized to match up with phased fiber deployment in smaller or rural communities
- Pedestals offer more flexibility for installation locations compared to cabinets
- Field-friendly design, craft interface is similar to existing cabinet style offerings
- Reduced inventory by using same splitter module as larger FDH designs

TECHNICAL DATA



Technical Assistance

Europe & Middle East • +32 2 712 6542 • euro.tac@adckrone.com
www.adckrone.com

OmniReach® FTTX Solutions

"Hub in a Pedestal" Fiber Distribution Hub

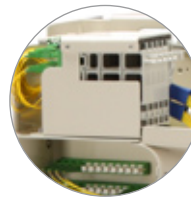
05/09 • 107400BE OmniReach® FTTX Solutions

Features

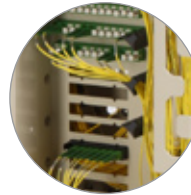
- Available in fiber counts from 12 to 96
- Swing frame access to distribution fibers
- Uses same cable management and splitter configuration as FDH 3000
- Parking lot storage for up to 64 fibers
- Six available plug and play splitter slots: (3) 1x32 or (6) 1x16
- Integrated splicing for feeder and distribution fibers (total of 5 full-size splice trays)
- Multiple cable clamps to support pass through cables
- Option to provide up to four hardened drop connections
- Barrier plate minimizes damage from ground moisture and rodents
- Dimensions (HxWxD)*: 889 mm x 292 mm x 368 mm

Savings

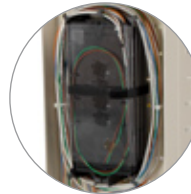
- Poured mounting pad not required
- Hand hole can be avoided
- Plug and play connections and accessible controls minimize technicians service time in the field



Six plug and play splitter slots



Parking lot storage



Full size splice trays



Option to add hardened drops



Front view



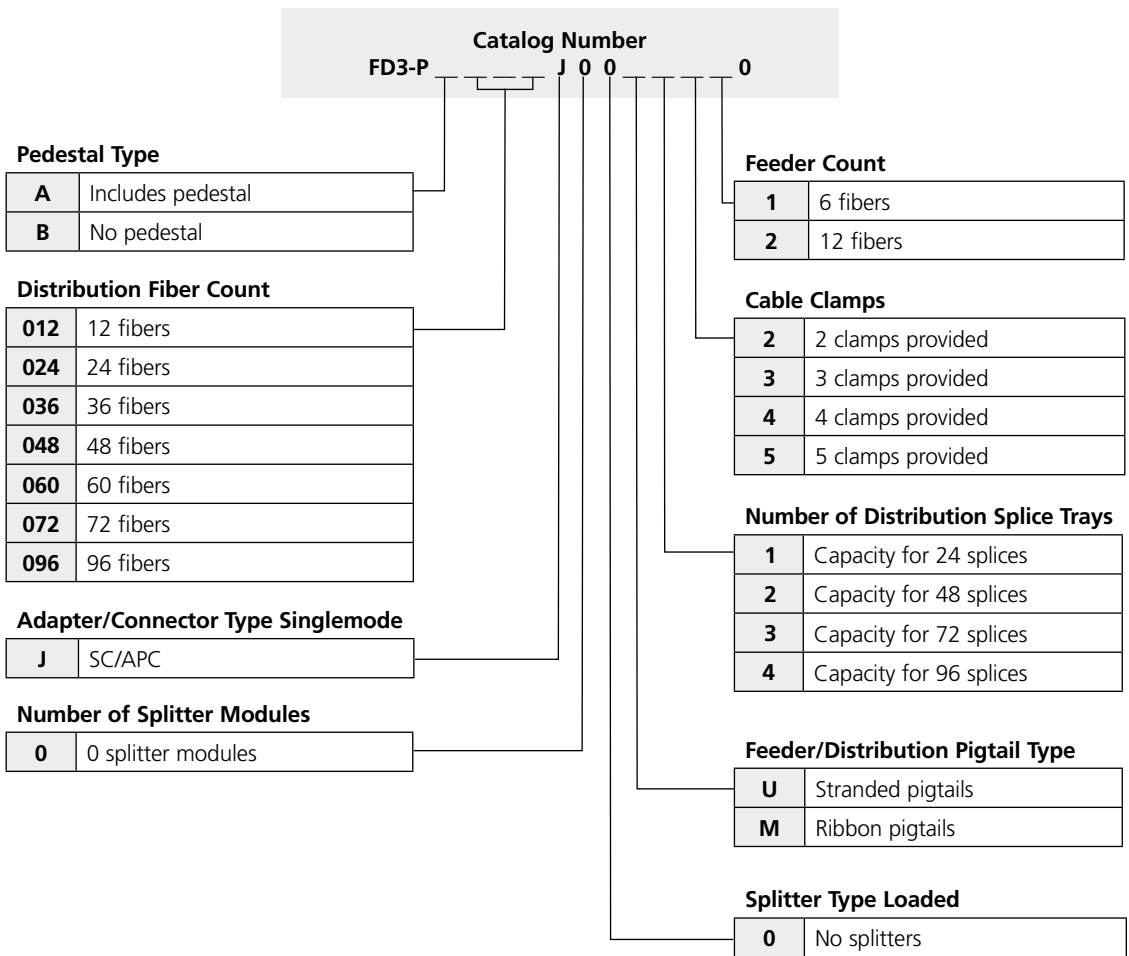
Rear view

*Dimensions are above grade reference dimensions.
Pedestal extends approximately 254 mm below grade

OmniReach® FTTX Solutions

"Hub in a Pedestal" Fiber Distribution Hub

05/09 • 107400BE OmniReach® FTTX Solutions



Accessories

Ordering Information

Description	Catalog Number
Distribution panel growth kit , includes 12 SC/APC adapters and pigtail assembly	FD3-PACCF2GRW
Splice trays	
Capacity of 24 fibers with heat shrink fusion chips	FST-HS-48
Capacity of 24 fibers with mechanical chip for mass fusion splicing	FST-D-MT
Cable clamp kit , includes clamp, grommet and hardware for 1 cable	FAT-ACC001
Pedestal stake , for Emerson Proform-12 style pedestal	FD3-PACCSTK1
Hardened drop kit , Includes 4 adapter mounting plate, one hardened adapter, one jumper cable and one SC/APC adapter	FD3-PACCDRPBKT
Growth hardened drop adapter , Includes one hardened adapter, one jumper cable and one SC/APC adapter	FD3-PACCDRPGRW
Optical plug and play splitter modules with SC/APC connectors*	
Standard splitters	
1x32, occupies one splitter slot	FPS-MPA1AJJ
1x16, occupies one splitter slot	FPS-MPA1CJJ
Premium splitters	
1x32, occupies one splitter slot	FPS-MPP1AJJ
1x16, occupies one splitter slot	FPS-MPP1CJJ
1x64, occupies two splitter slots	FPS-MPP1SJJ

* For optical plug and play splitter specifications, please contact the Technical Assistance Center.

TECHNICAL DATA



Web Site: www.adckrone.com

EMEA Office: ADC GmbH, Beeskowdamm, 3-11, 14167 Berlin, Germany • Phone: +49 30 8453-1818 Fax: +49 30 8453-1703. For a listing of all ADC KRONE's global sales office locations, please refer to our web site.

UK Office: ADC Communications (UK) Ltd., Runnings Road, Kingsditch Trading Estate, Cheltenham, Gloucestershire GL51 9NQ, United Kingdom • Phone: +44 (0) 1242 264 400 Fax: +44 (0) 1242 264 488 contactuk@adckrone.com

Specifications published here are current as of the date of publication of this document. Because we are continuously improving our products, ADC KRONE reserves the right to change specifications without prior notice. At any time, you may verify product specifications by contacting ADC GmbH headquarters in Berlin. ADC Telecommunications, Inc. views its patent portfolio as an important corporate asset and vigorously enforces its patents.

107400BE May 09 Original © 2009 ADC Telecommunications, Inc. All Rights Reserved