

Campus & Backbone Blown Fibre



Introduction.....	3.25
Cables	
Singlemode	3.26
Multimode.....	3.30
Tubes	
Internal.....	3.34
Duct Grade.....	3.35
Direct Burial.....	3.36
Installation Equipment	3.37
Blowing Accessories.....	3.40

10/06 • 102588BE TrueNet® Structured Cabling

Introduction

The TrueNet Blown Fibre system from ADC KRONE provides a simple solution to manage evolving network demands without the need for high initial capital expenditure or extensive network planning. Blown Fibre enables optical networks to adapt to changing business requirements.

The TrueNet solution allows optical fibres to be deployed on demand from one point of a network to another (internal or external) using compressed air to blow optical fibre into pre-installed tubes.

Building your network using the TrueNet Blown Fibre system could realise the following benefits:

Simplified Planning

- Network is built according to today's needs
- Fibre count can be increased as demand grows

Cost Effective

- Pay as you grow – install empty tubes and only pay for fibre as and when required spreading capital investment overtime
- Reduced splicing – minimises branching and splicing of traditional networks thus reducing engineering costs
- Deployment of fibres is related to actual requirement
- Elimination of unlit fibre

Increased Flexibility

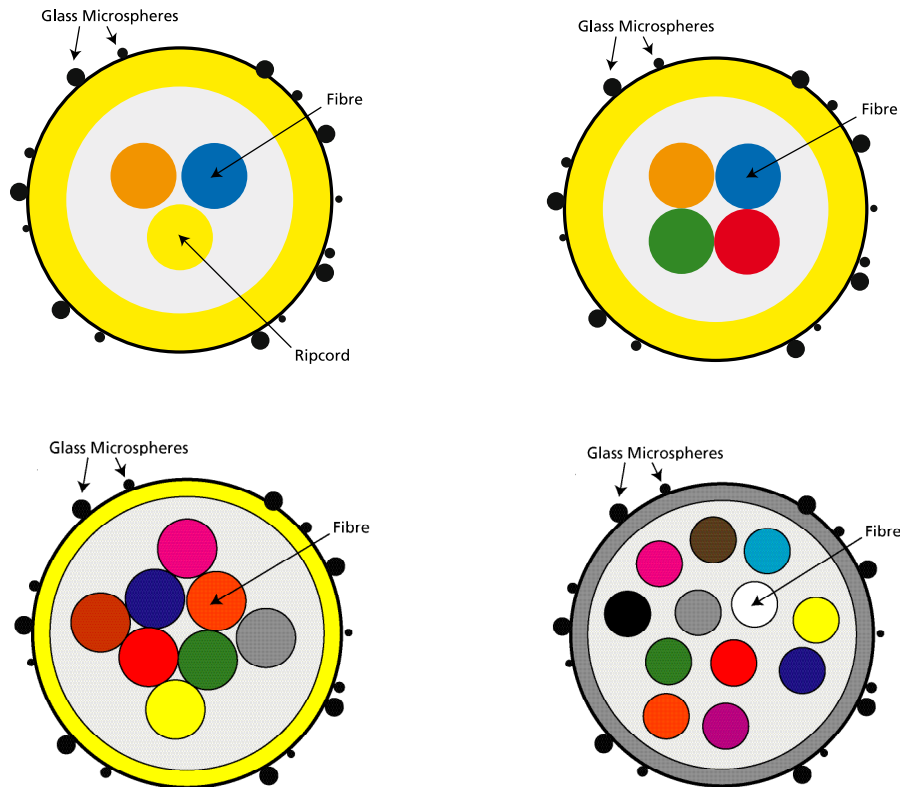
- Future proof network build
- Networks are easily upgraded, branched or extended, giving maximum flexibility and uninterrupted fibre blowing right to the destination
- Simplified emergency restoration
- Latest and emerging fibre technologies can be deployed

Speed of Customer Connections

- Equivalent performance for first connections, significantly reduced timescales and costs for subsequent connections
- Existing tube routes can be interrupted at any place, allowing rapid network upgrades

The flexibility offered by a blown fibre solution can substantially minimise network bill costs. Given the uncertainty of trends in technology, demand growth, people movement and financial confidence, Blown Fibre provides a flexible, low total life cost and complete solution.

Blown Fibre Unit Singlemode



ADC KRONE's optical fibre units are specifically engineered for blown fibre applications. The fibres are contained in a soft inner acrylate layer which cushions the fibres and an outer harder layer which protects the fibres from damage. Glass microspheres, added to the outer layer during manufacturing, provide a low friction layer that assists in improving blowing distances, which are typically in excess of 1000m. The blown fibre units are identified by a colour coded outer layer.

Features

- Colour coded outer layer identifies the grade of fibre in the unit
- Blowing distances up to 1000m (750m for 12 core)
- Fibre units are manufactured to British Telecom specifications
- Fibres already installed can be removed and replaced with a higher fibre count, ensuring future capacity of the installation
- Once removed, the fibres can be re-used at another site, helping to keep the cost of installation down
- Fibres can be deployed from an external location to the internal presentation point, removing the need to splice at the building entry point

TrueNet® Structured Cabling

10/06 • 102588BE

Campus & Backbone
Blown Fibre

Blown Fibre Unit OS1 Singlemode (9/125µm)

Ordering Information

Description	Catalogue Number
Blown Fibre, Singlemode, 2 Fibre Cores	
500m	7032 1 401-00
1000m	7032 1 400-01
2000m	7032 1 400-02
6000m	7032 1 400-03
Blown Fibre, Singlemode, 4 Fibre Cores	
500m	7032 1 401-01
1000m	7032 1 400-04
2000m	7032 1 400-05
6000m	7032 1 400-06
Blown Fibre, Singlemode, 8 Fibre Cores	
500m	7032 1 401-02
1000m	7032 1 400-07
2000m	7032 1 400-08
4000m	7032 1 400-09
Blown Fibre, Singlemode, 12 Fibre Cores	
500m	7032 1 401-12
1000m	7032 1 401-13
1500m	7032 1 401-03
2000m	7032 1 401-14
4000m	7032 1 401-15

Blown Fibre Unit Singlemode

Technical Data

Optical properties		Value	Units
Attenuation coefficient	1310nm	≤ 0.38	dB/km
	1550nm	≤ 0.26	dB/km
Mode field diameter	Petermann II	9.2 ± 0.4	µm
Cut-off wavelength (cabled)	λ _{cc}	≤ 1260	nm
Dispersion	1285 - 1330nm	≤ 3.5	ps/nm.km
	1550nm	≤ 18	ps/nm.km
Zero dispersion wavelength	λ ₀	1300 - 1324	nm
	Slope	≤ 0.092	ps/nm ² .km

Geometrical properties

Reference surface diameter	125 ± 1	µm
Core to cladding concentricity error	≤ 0.7	µm
Reference surface non-circularity	≤ 1.5	%
Coating diameter (coloured)	245 ± 10	µm

Physical properties

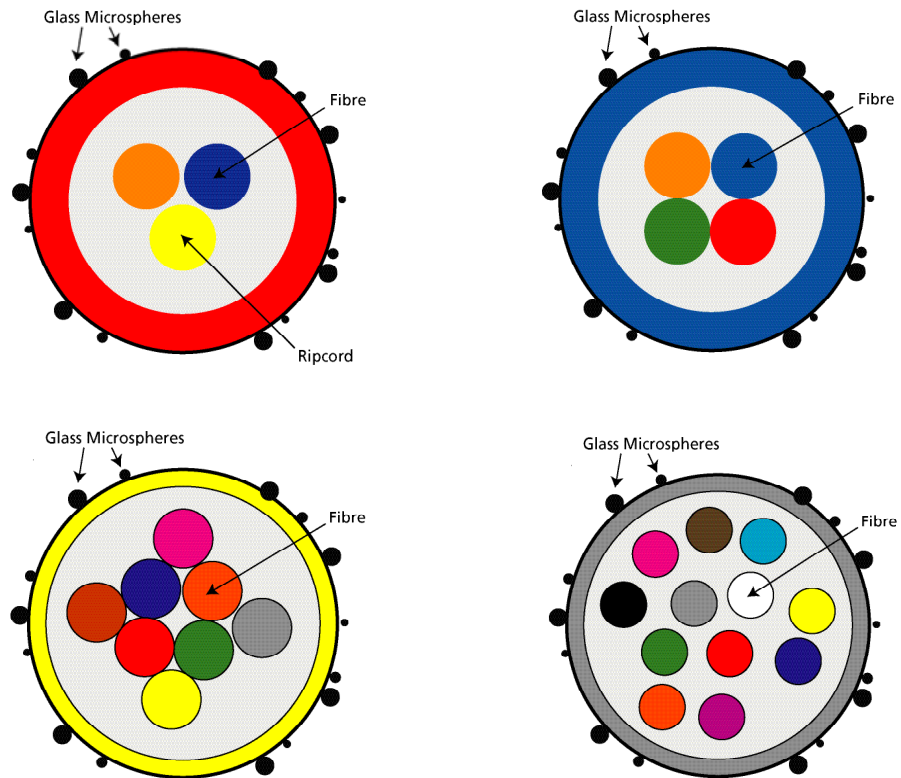
Proof test level	≥ 1.0	%
------------------	-------	---

Blown Fibre Unit Singlemode

Specifications

Number of fibres	2	4	8	12	Units
Diameter	1.02± 0.06		1.4	1.38	mm
Sheath colour	Yellow			Grey	
Weight	0.8		1.5	1.66	g/m
Breakout (typical)	≤ 2	≤ 3	≤ 5	≤ 1	minutes
Blowing distance (typical)	1000			750	metres
Fibre colours	Blue, orange	Blue, orange, green, red	Blue, orange, green, red, violet, grey, yellow, brown	Blue, orange, green, red, violet, grey, yellow, black, white, pink, turquoise, brown	
Packaging	Fibre rosette into pan			Fibre on reel	

Blown Fibre Unit Multimode



ADC KRONE's optical fibre units are specifically engineered for blown fibre applications. The fibres are contained in a soft inner acrylate layer which cushions the fibres and an outer harder layer which protects the fibres from damage. Glass microspheres, added to the outer layer during manufacturing, provide a low friction layer that assists in improving blowing distances, which are typically in excess of 1000m. The blown fibre units are identified by a colour coded outer layer.

Features

- Colour coded outer layer identifies the grade of fibre in the unit
- Blowing distances up to 1000m (750m for 12 core)
- Fibre units are manufactured to British Telecom specifications
- Fibres already installed can be removed and replaced with a higher fibre count, ensuring future capacity of the installation
- Once removed, the fibres can be re-used at another site, helping to keep the cost of installation down
- Fibres can be deployed from an external location to the internal presentation point, removing the need to splice at the building entry point

Blown Fibre Unit OM1 Multimode (62.5/125um)

Ordering Information

Description	Catalogue Number
Blown Fibre, Multimode 62.5/125um, 2 Fibre Cores	
500m	7032 1 401-06
1000m	7032 1 400-20
2000m	7032 1 400-21
4000m	7032 1 400-22
6000m	7032 1 400-23
Blown Fibre, Multimode 62.5/125um, 4 Fibre Cores	
500m	7032 1 400-25
1000m	7032 1 400-26
2000m	7032 1 400-27
4000m	7032 1 400-28
Blown Fibre, Multimode 62.5/125um, 8 Fibre Cores	
500m	7032 1 400-29
1000m	7032 1 400-30
2000m	7032 1 400-31
4000m	7032 1 400-32

Blown Fibre Unit OM2 Multimode (50/125um)

Ordering Information

Description	Catalogue Number
Blown Fibre, Multimode 50/125um, 2 Fibre Cores	
500m	7032 1 401-04
1000m	7032 1 400-10
2000m	7032 1 400-11
4000m	7032 1 400-12
Blown Fibre, Multimode 50/125um, 4 Fibre Cores	
500m	7032 1 401-05
1000m	7032 1 400-13
2000m	7032 1 400-14
4000m	7032 1 400-15
Blown Fibre, Multimode 50/125um, 8 Fibre Cores	
500m	7032 1 400-16
1000m	7032 1 400-17
2000m	7032 1 400-18
4000m	7032 1 400-19

Blown Fibre Unit OM3 Multimode (62.5/125um)

Ordering Information

Description	Catalogue Number
2F OM3 Multimode PANS	
500M	7032 1 406-01
1000M	7032 1 406-02
2000M	7032 1 406-03
4F OM3 Multimode PANS	
500M	7032 1 406-05
1000M	7032 1 406-06
2000M	7032 1 406-07
8F OM3 Multimode PANS	
500M	7032 1 406-09
1000M	7032 1 406-10
2000M	7032 1 406-11
12F OM3 Multimode PANS	
1000M	7032 1 406-14
2000M	7032 1 406-15

Blown Fibre Unit OM3e Multimode (62.5/125um)

Ordering Information

Description	Catalogue Number
2F OM3e Multimode PANS	
500M	7032 1 407-01
1000M	7032 1 407-02
2000M	7032 1 407-03
4F OM3e Multimode PANS	
500M	7032 1 407-05
1000M	7032 1 407-06
2000M	7032 1 407-07
8F OM3e Multimode PANS	
500M	7032 1 407-09
1000M	7032 1 407-10
2000M	7032 1 407-11
12F OM3e Multimode PANS	
1000M	7032 1 407-14
2000M	7032 1 407-15

Blown Fibre Unit Multimode

Optical Properties			Value	Units
Attenuation coefficient	850 nm	OM1	≤ 3.5	dB/km
		OM2, 3, 3e	≤ 2.6	dB/km
	1300 nm	OM1	≤ 1.0	dB/km
		OM2, 3, 3e	≤ 1.2	dB/km
Modal bandwidth	850 nm	OM1	≥ 200	MHz.km
		OM2	≥ 500	MHz.km
		OM3	≥ 1500	MHz.km
		OM3e	≥ 3500	MHz.km
	1300 nm	OM1	≥ 600	MHz.km
		OM2	≥ 800	MHz.km
		OM3	≥ 500	MHz.km
		OM3e	≥ 500	MHz.km
Effective modal bandwidth	850 nm	OM3	≥ 2000	MHz.km
		OM3e	≥ 4700	MHz.km
10Gbe transmission distance	850 nm	OM3	300	m
		OM3e	550	m

Geometrical Properties

Cladding diameter		125 ± 2	µm
Core diameter	OM1	62.5 ± 3	µm
	OM2, 3, 3e	50 ± 3	µm
Core to cladding concentricity error	≤ 3	%	
Cladding non-circularity		≤ 2	%
Coating diameter (coloured)		250 ± 15	µm

Physical Properties

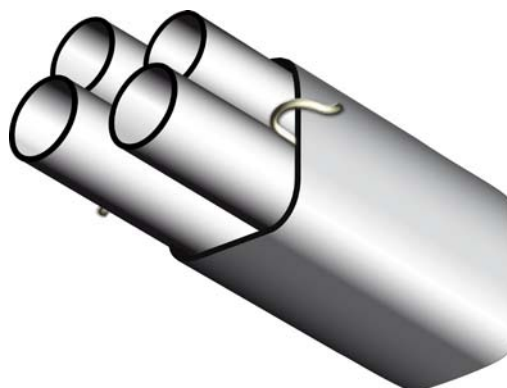
Proof test level	≥ 1	%
------------------	-----	---

Specifications

Number of fibres	2	4	8	12	Units
Diameter	1.02 ± 0.06		1.4		mm
Sheath colour	OM1 = red, OM2/3 = blue, OM3e = turquoise			Grey	
Weight	0.8	0.9	1.5		g/m
Breakout (typical)	≤ 2	≤ 3	≤ 5		minutes
Blowing distance (typical)	1000			750	metres
Fibre colours	Blue, orange	Blue, orange, green, red	Blue, orange, green, red, violet, grey, yellow, brown	Blue, orange, green, red, violet, grey, yellow, black, white, pink, turquoise, brown	
Packaging	Fibre rosette into pan				

TrueNet® Blown Fibre Tubes (Internal)

HDPE (High Density Polyethylene) low friction tubes for blown fibre installations in-building applications.



Features

- Low friction internal coating for maximum fibre blowing distance
- 5mm O/D, one tube accommodates up to a 12 fibre unit
- LSZH indoor version with flame retardant properties
- Supplied on wooden drums

Ordering Information

Description							Catalogue Number
Assembly Type	Nominal O.D. (mm)	Rip Cord Quantity	Min. Bend Radius (mm)	Max Tensile (N)	Nominal Weight (g/m)	Metres	
1 Way	5.0	-	150	80	14	500	7032 1 400-43
2 Way	7.2 x 12.2	1	150	390	74	500	7032 1 400-44
4 Way	12.2	1	250	600	118	500	7032 1 400-45
7 Way	17.2	1	350	880	175	500	7032 1 400-46
12 Way	22.5	2	450	1500	267	500	7032 1 401-17
19 Way	27.2	2	550	2200	387	500	7032 1 400-47

Crush Performance

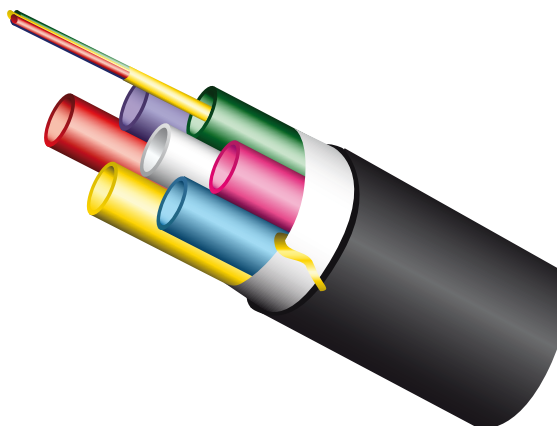
Tested in accordance with IEC 60794-1-2 method E3. After a maintained load of 400N for one minute there shall be no deformation of primary tubes greater than 0.5mm.

Campus & Backbone

TrueNet® Blown Fibre Tube Cable – External

Blown Fibre Tubes (Duct Grade/Direct Install)

The external tube cables are offered with a HDPE (High Density Polyethelene) outer sheath and a variable number of HDPE low friction tubes.



Features

- Rapid, dedicated customer connections using proven mechanical protection of HDPE
- Low friction internal coating for maximum fibre blowing distance
- Each tube accommodates one blown fibre unit (up to 12 fibres in a unit)
- External tube cables available in 1, 2, 4, 7, and 19 way assemblies
- Cable construction – Direct Install (duct grade), with aluminium moisture barrier
- 5mm tube construction

Ordering Information

Description							Catalogue Number
Assembly Type	Nominal O.D. (mm)	Min. Bend Radius	Max. Tensile Strength (N)	Nominal Weight (g/m)	Crush Rating (kN)	Metres	
1 Way	9.4	12 x D	1W (490)	49	1	500	7032 1 400-33
2 Way	8.8 x 13.8	12 x D	1W (780)	78	1	500	7032 1 400-34
4 Way	16.5	12 x D	1W (1160)	116	1	500	7032 1 400-35
7 Way	19.4	12 x D	1W (1590)	159	1	500	7032 1 400-36
19 Way	28.8	12 x D	1W (3230)	323	1	1000	7032 1 400-37

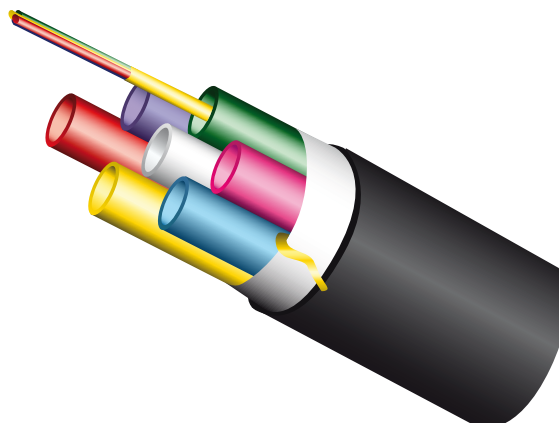
Campus & Backbone

TrueNet® Blown Fibre Tube Cable – External

Blown Fibre Tubes (Direct Bury Cable)

The direct bury cable is a heavier construction than the direct install. This cable type lies flatter in trenches, has increased crush rating and has more resistance to localised bending.

The assembly of 5mm tubes is surrounded by an aluminium moisture barrier and two polyethelene sheath layers for improved physical robustness.



Features

- Rapid, dedicated customer connections using proven mechanical protection of HDPE (High Density Polyethylene)
- Low friction internal coating for maximum fibre blowing distance
- Each tube accommodates one blown fibre unit (up to 12 fibres in a unit)
- External tube cables available in 2, 4, 7 and 12 way assemblies
- Cable construction – direct bury with aluminium moisture barrier
- 5mm tube construction

Ordering Information

Description							Catalogue Number
Assembly Type	Nominal O.D. (mm)	Min. Bend Radius	Max. Tensile Strength (N)	Nominal Weight (g/m)	Crush Rating (kN)	Metres	
2 Way	13.2 x 18.2	12 x D	1W (1420)	142	2	500	7032 1 400-49
4 Way	22.3	12 x D	1W (2040)	204	2	500	7032 1 400-50
7 Way	23.3	12 x D	1W (2780)	278	2	500	7032 1 400-51
12 Way	29.5	12 x D	1W (4790)	479	2	1000	7032 1 401-18

TrueNet® Structured Cabling

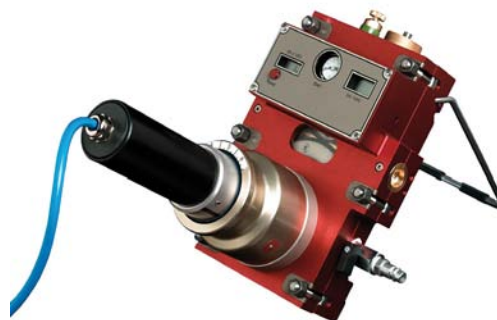
10/06 • 102588BE

Campus & Backbone
Blown Fibre

Blowing Head

The Blowing Head is designed for the installation of Enhanced Performance Fibre Units (EPFU) in tubes by the push-pull method. Here, the cable is pushed by a system of drive and pressure rollers and pulled by a shuttle attached at the cable head.

The installation speed, which can be controlled by the pushing system, is limited to 40m/min. The maximum installation length can be influenced by the tube path geometry.



Ordering Information

Description	Catalogue Number
Blown Fibre Blowing Head 2A (MkII)	7032 1 400-53

Technical Data

Maximum fibre size	12 fibres
Range of blown tube diameters	3-12 mm
Input drive voltage	24 VDC
Pushing force	0-25 N
Pressure exerted on fibre	20-100 N
Fibre installation rate	0-40 m/min
Rated pressure intake	2-10 bar
Rated airflow (3-6mm tubes) (8-12mm tubes)	Approx. 200 ltrs/min Approx. 500 ltrs/min
Dimensions l x w x h Weight	240 x 150 x 190 (mm) 5.5 kg

Each blowing head is supplied with:

- A case for the apparatus, tools, adaptors and consumption items (joints, lubricant, etc.)
- One tube adaptor
- One cable adaptor
- Air connector 1/4" and stop valve
- One speed and distance counter
- One manual for operation and maintenance
- One list of spare parts
- One spring balance for calibrating the max pulling/pushing force

Blown Fibre Electric Compressor

The Blown Fibre Compressors are designed to deliver clean dry air for installing optical fibre using the blown fibre technique.

Both models (240v & 110v) feature quiet running, electrically driven rotary vane compressor units. These produce 100 ltrs/min of pulse free treated compressed air at a working pressure of 10 bar. Together with their portability this makes them the ideal source of air for internal building optical fibre installations.

An air cooled aftercooler, reduces compressed air temperature to within 2°C of ambient and a 3-stage filtration system provides technically oil-free air.

These units are available with a 24VDC outlet socket for supplying the blowing head.



Ordering Information

Description	Catalogue Number
Blown Fibre Electric Compressor (110V)	7032 1 405-00
Blown Fibre Electric Compressor (240V)	7032 1 405-01

Model	Length (mm)	Width (mm)	Height (mm)	Weight (kg)	Output (ltrs/min)	Pressure (bar)	Noise	Voltage Level
240V	900	450	700	63	100	10	60dB(A) at 1m	240v-1ph-50Hz
110V	900	450	700	63	100	10	60dB(A) at 1m	110v-1ph-50Hz

Blown Fibre Petrol Compressor

The blown fibre compressor is a portable, petrol engine driven rotary vane compressor unit. Producing 120 ltrs/min of pulse free treated compressed air at a working pressure of 10 bar, it provides the ideal source for field installation of fibre optic cable.

The unit incorporates a 12VDC air cooled aftercooler reducing the compressed air temperature to within 2°C of ambient. A 3-stage filtration system provides technically oil-free air.

The unit is available with a 24VDC-outlet socket for supplying the blowing head.



Ordering Information

Description	Catalogue Number
Blown Fibre Petrol Compressor	7032 1 400-54

Length (mm)	Width (mm)	Height (mm)	Output (ltrs/min)	Pressure (bar)	Weight (kg)
900	500	750	200	10	85

TrueNet® Blown Fibre Gas Seal Unit

The Gas Seal Unit is used in business or residential premises. This is a wall mounted unit that is positioned internally at the cable entry point. Incoming external tubing is converted to internal distribution tubing using gas sealing connectors. These connectors are used to seal both populated (with blown fibre unit) and unpopulated tubing. The gas seal unit is used for internally fed cable or with a customer lead-in for cables entering through the fabric of the wall.



Features

- Compact, low profile, wall mounted unit used in business or residential premises
- Removable cover for easy access
- Unit manufactured from fire resistant material to UL94-V0
- Kit supplied with components to mount the unit to a wall and secure external cable
- Gas sealing connectors used to provide connection of external and internal tubing. Connectors provide gas tight seal for populated (with blown fibre unit) and unpopulated tubes. Gas seal connectors are supplied separately
- Gas tight sealing caps used to terminate unused external cable tubes. Gas sealing caps are supplied separately
- Accommodates up to one 12 tube external blown fibre cable and internal blown fibre cables, in any combination up to a 12 tube cable
- For internally fed cables, a quick set resin (supplied) is used to seal the cable interstices from the ingress of water or gas
- For external cables fed via the wall fabric, an interface to an internal customer lead-in is provided
- Remote toning point is provided for connection to metallic moisture barrier of the external cable

Ordering Information

Description	Catalogue Number
Blown Fibre Gas Seal Unit	7032 1 401-19

Kit shipped with:

- Base and cover
- Wall fixings
- Toning adaptor
- Sealing resin

TrueNet® Blown Fibre Gas Seal Unit

Technical Data

Maximum capacity

External cable	One 12 tube cable
Maximum cable diameter	25mm
Dimensions (mm)	(w) 96 x (d) 60 x (h) 210
Operating temperature	-20°C to + 50°C (5 to 95% relative humidity)
Material	FR ABS
Colour	Light grey
Flammability rating	UL94-V0

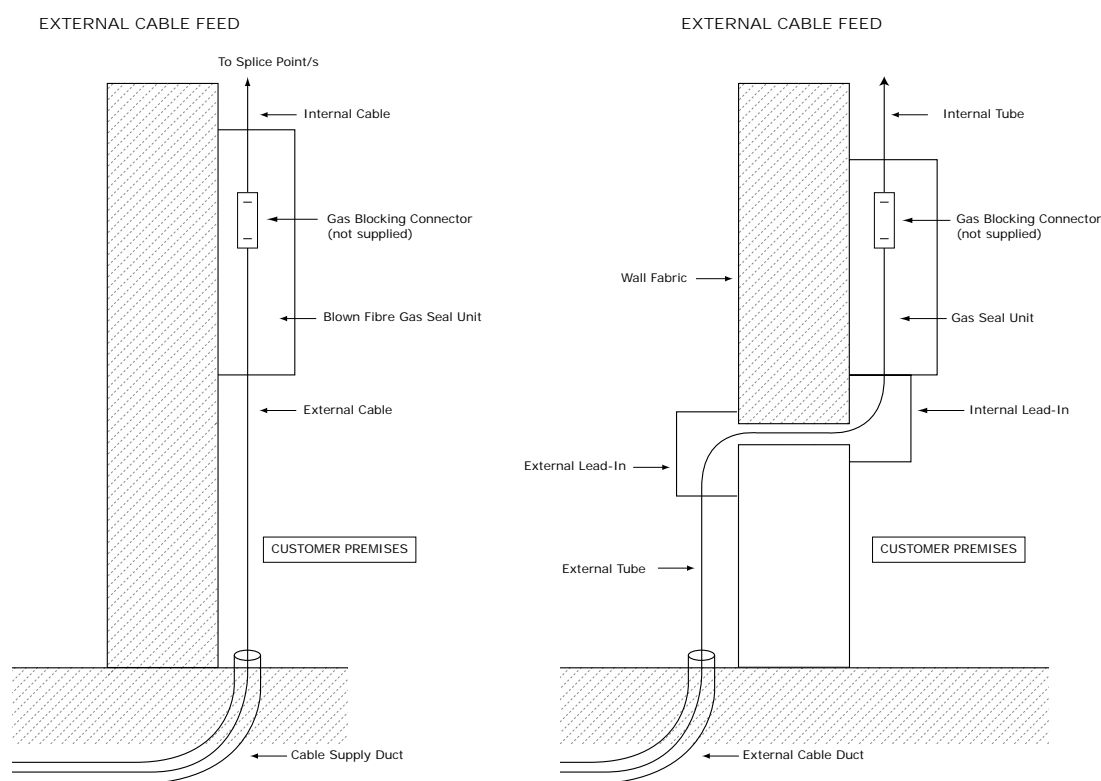
Testing

Dry heat	BS EN 60068-2-2 Test Bb
Damp heat	IEC 68-2-3
Change of temperature	IEC 68-2-14

Specifications

Packed Weight (kg):	0.7
---------------------	-----

Application Information



The Gas Seal Unit is supplied with wall fixings, wall fixing template, toning connector and sealing resin
 NOTE: Gas Seal Connectors and Tube Sealing Caps are not supplied

TrueNet® Blown Fibre Customer Lead-in Units

The Customer Lead-in Unit enables external cable to be passed through the building fabric from an outside wall and is used in business or residential premises. The Customer Lead-in comprises two separate units mounted either side of the wall and connected by a length of conduit.

This product can be used with blown fibre tubing or conventional cable.



Features

- Compact internal and external mounted units used in business or residential premises
- Removable cover for easy access
- External unit manufactured from UV resistant material. Internal unit manufactured from fire resistant material to UL94-V0
- Kit supplied with all components necessary to feed external cable elements into the customer premises from an external wall face
- Elements are protected through the cavity using a 32mm diameter conduit which interfaces with the internal and external Customer Lead-in units
- The external unit is sealed using a quick set resin. This ensures the external cable interstices are sealed against the ingress of water or gas into the customer premises
- A remote toning point is provided within the external unit for connection to the metallic moisture barrier of the external cable
- All cable elements are positively managed to 50mm minimum bend radius
- Up to 7 x 5mm tubes can be accommodated
- Internal unit interfaces with a Blown Fibre Gas Seal Unit

Ordering Information

Description	Catalogue Number
Blown Fibre Customer Lead-in Units	7032 1 400-85

The Customer Lead-in consists of one internal unit and one external unit and is supplied with wall fixings, fixing templates, conduit, sealing resin and a toning connector.

TrueNet® Blown Fibre Customer Lead-in Units

Technical Data

Maximum capacity

Maximum cable diameter (mm)	30
Required space envelope (mm)	(w) 80 x (d) 60 x (h) 140
Operating temperature	-20°C to + 50°C (5 to 95% relative humidity)
Bend radius (mm)	50
Material	FR ABS
Flammability rating	UL94-V0

Colour

External unit	Dark grey
Internal unit	Light grey

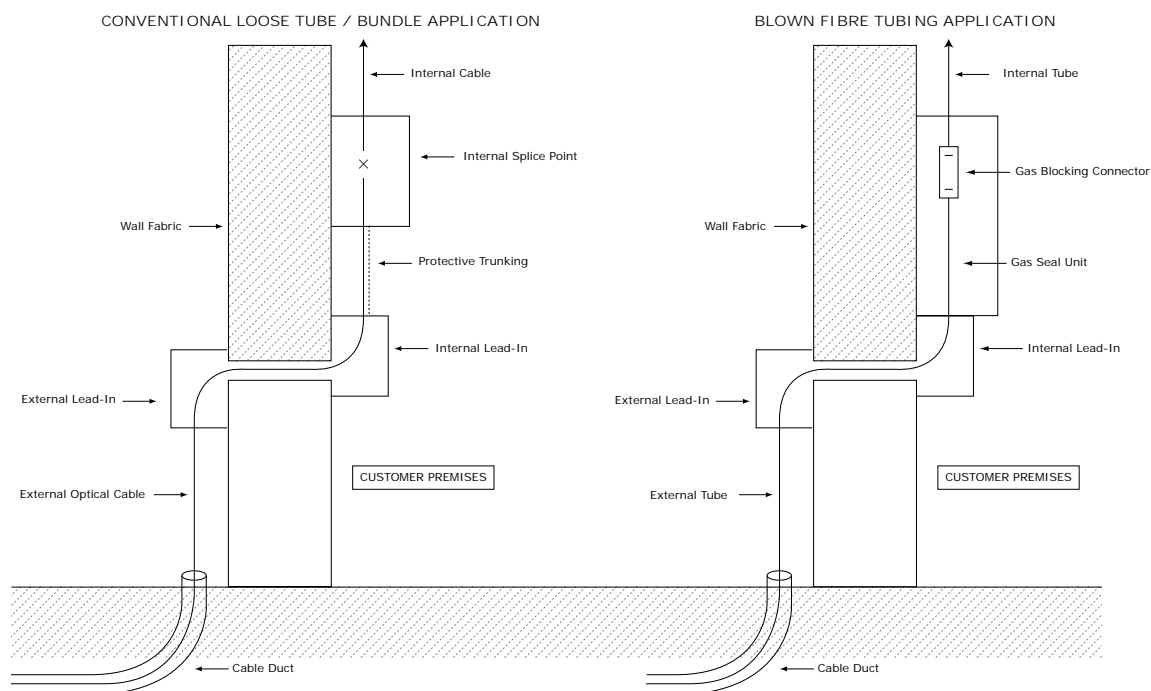
Testing

Dry heat	BS EN 60068-2-2 Test Bb
Damp heat	IEC 68-2-3
Change of temperature	IEC 68-2-14

Specifications

Packing Dimensions (mm):	(w) 500 x (d) 150 x (h) 95
Packed Weight (kg):	1.04
Net weight (kg):	0.96

Application Information



TrueNet® Internal Tube Distribution Unit

The Internal Tube Distribution Unit (Internal TDU) has been designed to allow maximum flexibility within building applications. The Internal TDU accepts a range of indoor tube assemblies up to 19 tube capacity. The units allow individual tube breakout, re-routing or gas / water sealing. The tubes are positively managed to prevent excessive tube bending.



Features

- Reconfigurable internal unit to house blown fibre tube connections
- Suitable for both internal to internal connections as well as external to internal connections (with the use of gas seal tube connectors)
- Accepts up to a 19 way duct at each entry point
- Up to 4 ports, reconfigurable dependent upon the application
- Can be used as:
 - a straight through internal connection point
 - an internal branching point
 - an external to internal gas sealing unit
- Compact and simple to install
- Tubes can be positively managed inside the unit so as not to exceed minimum bend radius
- Glands are included to ensure an effective fit of units routed through the manifolds

Ordering Information

Description	Catalogue Number
Internal Tube Distribution Unit	7032 1 401-50

Kit shipped with:

- Base and cover
- Wall fixings
- Toning adaptor
- Sealing resin

TrueNet® Internal Distribution Unit

Technical Data

Kit includes back plate, cover, bend radius managers (4), manifolds (8 halves), manifold glands (4), blanking plates (3), screws (4) and a label insert.

Complete installation instructions are provided with each unit.

All components except screws, inserts and cable glands are manufactured from ABS, UL94, V0.

Inserts manufactured from brass, lid screws and earthing point stand-off manufactured from zinc plated steel.

Cable glands are manufactured from flame retardant Multibase G75A 11 FR Z0481 and have circular cut out grooves to make fitting of tube bundles – up to 19 way rated UL94 V0 at 1.6mm.

All plastic parts to Pantone Cool 3C (equivalent to BT Grey – 3P) glands – grey.

Specifications

The unit has the following overall dimensions: 520 x 280 x 70mm

Individual external sizes as follows –

Box:

Length	320 mm
Width	180 mm
Depth	70 mm

Manifolds:

Length	105mm
Width	variable – max 64mm, min 44mm
Depth	variable – max 64mm, min 44mm

Tube Connector

Used for simple push fit connection of 5mm to 5mm blown fibre tubing. Can be used in external plant and with internal tubing of customer premises plant where gas sealing is not required.

Ordering Information

Description	Catalogue Number
Blown Fibre Tube Connector	7032 1 400-76

End Cap

Used for terminating unused blown fibre tubing within external plant.

Ordering Information

Description	Catalogue Number
Blown Fibre End Cap	7032 1 400-72

Water Blocking Connector

Used for water blocking blown fibre tubing entering underground external plant. A simple push fit device provides a water tight seal for tubes (unpopulated) and tubes with installed blown fibre units (populated). For populated tubing this device is fitted after fibre units have been installed.

Ordering Information

Description	Catalogue Number
Blown Fibre Water Blocking Connector	7032 1 400-77

Gas Seal Connector

Used for gas sealing blown fibre tubing entering a customers premises. The connector is used with customer premise plant and provides the interface between external and internal tubing. The connector simply push fits over the tube providing a gas tight seal for tubes (unpopulated) and tubes with installed fibre (populated). The device allows fibre to be 'blown through' into the customer premises. A sealing device is activated externally to seal the tube/unit.

Ordering Information

Description	Catalogue Number
Blown Fibre Gas Seal Connector	7032 1 222-00

Tube Sealing Cap

Used for sealing tubing entering a customer premises. This cap is used with customer premises plant and provides a gas tight seal to unpopulated tubes.

Ordering Information

Description	Catalogue Number
Blown Fibre Tube Sealing Cap	7032 1 223-00

Reducer Connector

Used for simple push fit connection of different sized blown fibre tubes, e.g. 8mm to 5mm. Can be used in external plant and with internal blown fibre tubing of customer premises plant where gas sealing is not required.

Ordering Information

Description	Catalogue Number
Blown Fibre Reducer Connector	7032 1 400-73

Valve and Moisture Trap

Used for controlling the flow of compressed air to the blowing head to enable safe installation of the fibre into the blown fibre tube.

Ordering Information

Description	Catalogue Number
Blown Fibre Valve and Moisture Trap	7032 1 501-00

Pan Guide

Located on top of the EPFU (Enhanced Performance Fibre Unit) pan during installation, it is used to guide the fibre from the pan to the blowing head.

Ordering Information

Description	Catalogue Number
Blown Fibre Pan Guide	7032 1 503-00

Flow Meter Kit

Contains a number of connectors that monitor and control the flow of compressed air through a tube link.

Ordering Information

Description	Catalogue Number
Blown Fibre Flow Meter Kit	7032 1 502-00

Tube Integrity and Length Tester (TILT)

The Tube Integrity and Length Tester is used to ensure that there are no air leaks in a blow length before installation (Tube and Connector). The full section length can then be measured to ensure an adequate length of fibre unit is available to blow.

Ordering Information

Description	Catalogue Number
Blown Fibre Tube Integrity and Length Tester	7032 1 227-00

Blowing Beads

A blowing bead is fixed to the end of the blown fibre unit before blowing commences. The bead helps the guidance of the blown fibre unit through the blown fibre tube particularly at bends. The beads also minimise the risk of snagging at connector locations.

Ordering Information

Description	Catalogue Number
Blown Fibre Blowing Beads	7032 1 400-58

Blowing Head Seals

For use with Blowing Head when deploying 8 or 12 Blown Fibre Units

Ordering Information

Description	Catalogue Number
Blown Fibre Blowing Head Seals	7032 1 508-00

Close Down Assembly

These assemblies, comprising a piece of tube with a connector at either end, are used to protect the area between two lengths of tube following a centre blow.

Ordering Information

Description	Catalogue Number
Blown Fibre Close Down Assembly	7032 1 228-00

10/06 • 102588BE TrueNet® Structured Cabling

Campus & Backbone
Blown Fibre