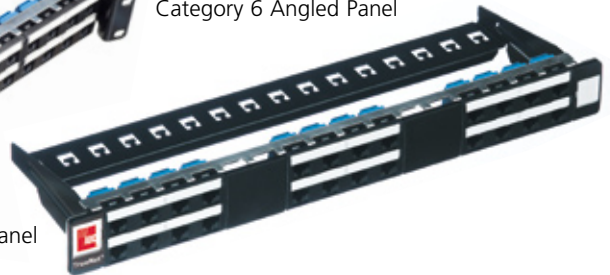


TrueNet®

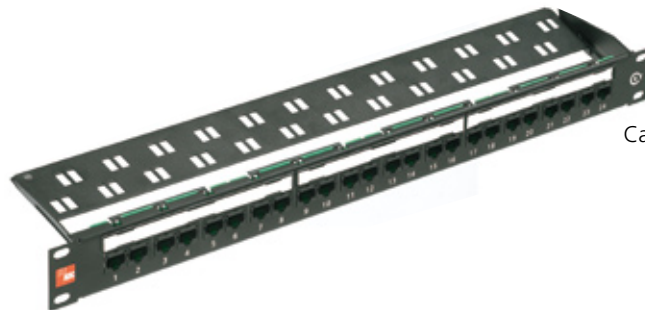
Category 6 Patch Panels



Category 6 Angled Panel



Category 6 Modular Panel



Category 6 PCB Panel

TrueNet® Category 6 patch panels from ADC KRONE offer high performance and a range of installation options.

The modular Category 6 panel utilises the high performing KM8® keystone jack. Modular panels offer complete flexibility within the communications room and with the KM8® panel flexibility is further enhanced by the 1U 16, 24 and high density 32 port formats (shielded or unshielded).

ADC KRONE also offers a selection of V-Angled panels designed specifically for use in high density environments such as Data Centres. These panels can accommodate 32 KM8® jacks in 1U and have a 150° shallow angle to minimise interference with cabinet doors.

The PCB patch panel delivers 24 UTP ports in a 19" 1U format. Designed with 4 vertical punch down blocks the panel ensures swift terminations and consistently high Category 6 component, channel and permanent link performance.

Features

- Supports Gigabit Ethernet up to 250MHz
- KM8® modular panels offer complete flexibility and high port density
- PCB style punch down blocks for swift efficient terminations
- Expansive cable management, full fixing kit and labelling facilities
- Fully interoperable and backwards compatible
- Third party certification at a component level

Benefits

- Bandwidth to support high-end LAN / applications
- Flexibility to suit installation requirements
- Fit and forget technology
- Third party certification offers complete peace of mind and guarantee quality
- Covered by the TrueNet® system warranty*

TECHNICAL DATA



Technical Assistance:
Europe & Middle East
+32 2 712 6542
euro.tac@adckrone.com
www.adckrone.com

South Africa
+27 11 466 3333
infos@adckrone.com

United Kingdom
0800 960236
contactuk@adckrone.com

Ordering Information

Description	Catalogue number
Patch panel, Category 6 KM8® UTP 16, 24 or 32 ports	7022 1 056-16/24/32
Patch panel, Category 6 KM8® STP 16, 24 or 32 ports	7022 1 055-16/24/32
Patch panel angled, Category 6 KM8 UTP 32 port	7022 1 344-32
Patch panel angled, Category 6 KM8 STP 32 port	7022 1 354-32
Patch Panel, Category 6 PCB UTP 24 ports	6527 1 806-24
Outrigger for PCB panel	6527 1 110-00

Electrical Data

Insulation resistance

Dielectric strength

Current carrying capacity

Typical plug / jack contact resistance

Terminations

Typical IDC contact resistance

Number of re-terminations

Shield connection

Conductor diameter

Insulation diameter

Mechanical Data

Plug / jack mating cycles

Plug / jack insertion / withdrawal Force

Dimensions

Environmental

Operating temperaturerange

Operating humidity range

KM8® & PCB Panels

≥ 500MΩ

Contact / contact 1 kVrms

Contact / shield 1.5kVrms

≥ 1A

≤ 20mΩ

≤ 1mΩ

≥ 30

Patented 360° shielding†

0.5-0.65mm (AWG 24-22)

0.7-1.6mm

≥ 750 (IEC / EN 60603-7 series)

≤ 20N (IEC / EN 60603-7 series)

KM8® - 483mm x 44mm x 150mm

PCB - 483mm x 44mm x 130mm

Angled - 483mm x 44mm x 195mm (21mm recess and 150° angle)

Testing requirements of connection technology according to ISO/IEC 11801 2nd Edition, ANSI/TIA/EIA-568-B.2-1 and EN 50173:2007.

All connecting hardware is tested individually and as part of a channel to ensure critical parameters of Powersummation, ACR, NEXT, ELFEXT and Return Loss exceed the requirements specified in international standards.

† STP only

* Terms & conditions apply

TECHNICAL DATA



Web Site: www.adckrone.com/en

UK Office: ADC Communications (UK) Ltd., Runnings Road, Kingsditch Trading Estate, Cheltenham, Gloucestershire GL51 9NQ, United Kingdom • Phone: +44 (0) 1242 264 400 Fax: +44 (0) 1242 264 488 Email: contactuk@adckrone.com

South African Office: ADC Telecommunications (Africa) PTY Ltd., 16 Brand Hatch Close, Kyalami Business Park, Midrand, 1685 Johannesburg, South Africa • Phone: +27 11 466 3333 Fax: +27 11 466 3300 Email: infos@adckrone.com

EMEA Office: ADC GmbH, Beeskowdamm, 3-11, 14167 Berlin, Germany • Phone: +49 308 453 1818 Fax: +49 308 453 1703. For a listing of all ADC KRONE's global sales office locations, please refer to our web site.

Specifications published here are current as of the date of publication of this document. Because we are continuously improving our products, ADC KRONE reserves the right to change specifications without prior notice. At any time, you may verify product specifications by contacting ADC GmbH headquarters in Berlin. ADC Telecommunications, Inc. views its patent portfolio as an important corporate asset and vigorously enforces its patents.

Part Number 101693BE Apr 09 Revision © 2005, 2009 ADC Communications (UK) Ltd. All Rights Reserved