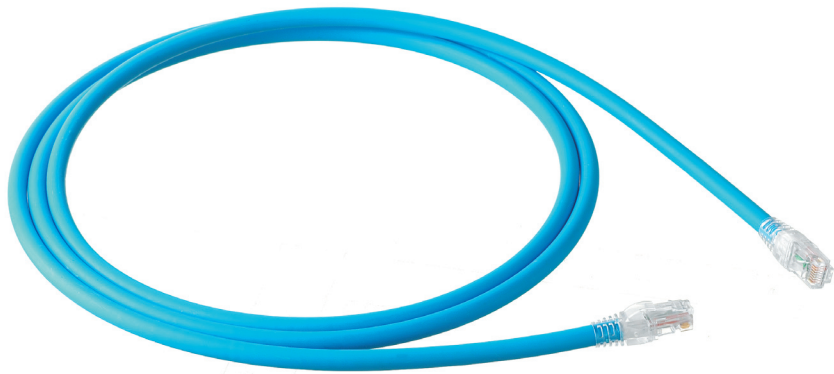


TrueNet®

CopperTen™ Unshielded Patch Cords



The TrueNet® Category 6_A solution supports 10 Gigabit Ethernet over unshielded copper to a full 100 metres up to 500 MHz.

CopperTen™ patch cords are designed to maximise network performance and system uptime with integrated strain relievers that prevent cable from moving at the termination point. ADC KRONE's unique manufacturing process compacts copper strands into a uniform circular shape, resulting in a patch cord with the flexibility of a stranded cord and the durability of a solid cord for optimum signal strength and maximum uptime.

CopperTen™ patch cords are available in a variety of lengths, colours and sheath types.

TECHNICAL DATA

Features

- Independently verified to TIA 568-B.2-10 Category 6_A; ISO/IEC 11801:2002 Amendment 1 Class E_A and ISO/IEC 11801:2002 Amendment 2 Class E_A (Draft)
- Patented technology to minimise the effects of alien crosstalk and insertion loss
- Supports 10 Gigabit Ethernet over unshielded copper to a full 100m up to 500MHz
- Stranded copper conductors in the cable pairs
- Flexible strain relief boot

Benefits

- Independent verification includes QA audits of manufacturing sites and random sample testing, which gives customers complete peace of mind
- Maximises productivity levels with 10 times the data throughput of Category 6
- Superior cable flexibility from stranded cores
- Boot maintains correct bend radius to ensure maximum performance
- True future proofing for tomorrow's network applications
- Covered by the TrueNet® System Warranty*

Ordering Information

| Description | Catalogue number |
|---|------------------|
| Patch cord, CopperTen™ RJ45 LSZH UTP Blue 1.0m | 6645-2-827-04 |
| Patch cord, CopperTen™ RJ45 LSZH UTP Blue 2.0m | 6645-2-827-07 |
| Patch cord, CopperTen™ RJ45 LSZH UTP Blue 3.0m | 6645-2-827-10 |
| Patch cord, CopperTen™ RJ45 LSZH UTP Blue 5.0m | 6645-2-827-15 |
| Patch cord, CopperTen™ RJ45 LSZH UTP Blue 5.0m | 6645-2-827-15 |
| Patch cord, CopperTen™ RJ45 LSZH UTP Blue 7.5m | 6645-2-827-25 |
| Patch cord, CopperTen™ RJ45 LSZH UTP Grey 10.0m | 6645-2-865-33 |
| Patch cord, CopperTen™ RJ45 PVC UTP Grey 2.0m | 6645-2-865-07 |
| Patch cord, CopperTen™ RJ45 PVC UTP Grey 3.0m | 6645-2-865-10 |
| Patch cord, CopperTen™ RJ45 PVC UTP Grey 5.0m | 6645-2-865-15 |
| Patch cord, CopperTen™ RJ45 PVC UTP Grey 7.5m | 6645-2-865-25 |
| Patch cord, CopperTen™ RJ45 PVC UTP Grey 10.0m | 6645-2-865-33 |

Other cable lengths are available upon request
Please contact ADC KRONE Customer Services for details.

Technical Specifications

Mechanical Data

| | |
|-----------------------------------|------------------------------------|
| Operating temperature range: | -20°C to 75°C |
| RJ45 Plug Interface according to: | IEC 60603-7 |
| Conductor: | 24 AWG 7x32 stranded tinned copper |
| Jacket: | LSZH (EN 60754-1 & -2) |
| Nominal Outer Diameter: | 7.87mm 3 0.13mm |

Compliances

| | |
|----------------------|-------------------------------|
| Safety rating: | IEC/EN 60950 LVD compliant |
| Flammability Rating: | IEC 60332-1 |

Testing requirements according to TIA 568-B.2-10 Category 6_A (Channel/Permanent Link); ISO/IEC 11801:2002 Amendment 1 Class E_A (Channel) and ISO/IEC 11801:2002 Amendment 2 Class E_A (Permanent Link - Draft). Component testing according to ISO/IEC 11801:2002 Amendment 2 Category 6_A (Draft).

*Terms & Conditions apply

TECHNICAL DATA

Tyco Electronics Ltd.
Rheinstrasse 20
CH-8200 Schaffhausen
Switzerland
Tel: +41 (0)52 633 66 61

www.tycoelectronics.com

Tyco Electronics
All rights reserved
102590BE 3/11 Revision © 2011

TE (logo), Tyco Electronics and ADC KRONE, are trademarks of the Tyco Electronics group of companies and its licensors.

While Tyco Electronics has made every reasonable effort to ensure the accuracy of the information in this document, Tyco Electronics does not guarantee that it is error-free, nor does Tyco Electronics make any other representation, warranty or guarantee that the information is accurate, correct, reliable or current. Tyco Electronics reserves the right to make any adjustments to the information contained herein at any time without notice. Tyco Electronics expressly disclaims all implied warranties regarding the information contained herein, including, but not limited to, any implied warranties of merchantability or fitness for a particular purpose. The dimensions in this document are for reference purposes only and are subject to change without notice. Specifications are subject to change without notice. Consult Tyco Electronics for the latest dimensions and design specifications.