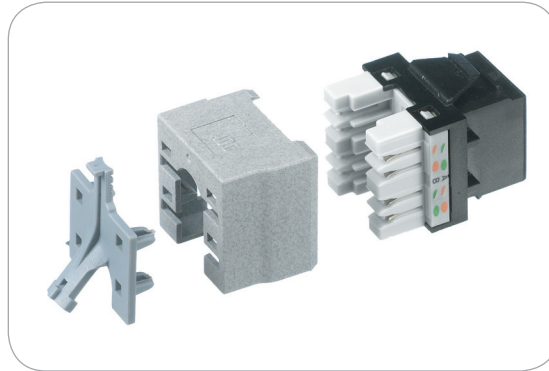


TrueNet® CopperTen™ Unshielded Jack



The TrueNet® Category 6_A solution supports 10 Gigabit Ethernet over unshielded copper to a full 100 metres up to 500 MHz.

The CopperTen™ Unshielded (UTP) Jack is a core component of the CopperTen™ solution and can be used in a range of accessories from floor boxes to patch panels and outlets offering complete flexibility depending upon the installation requirements.

All CopperTen™ components including the CopperTen™ Jack are fully interoperable and backwards compatible with existing Category 5e and Category 6 based cabling, components and systems.

As with all TrueNet® jacks, the CopperTen™ Jack uses the LSA-PLUS® Quick Connection technique, a highly reliable gas tight wire termination method.

Features

- Supports 10 Gigabit Ethernet over unshielded copper to a full 100m up to 500MHz
- Exceeds requirements of ISO/IEC 11801:2002 amendment 2 (draft), TIA-568-B.2-10, EN 50173-1:2007

- Jack performance is maximised using the innovative cable management to minimise alien crosstalk
- Fully interoperable and backwards compatible with component compliant Category 5e / Class D and Category 6 / Class E systems
- Compatible with a comprehensive range of accessories

Benefits

- A lower cost route to achieve 10 Gigabit performance in the Enterprise Network
- Maximises productivity levels with 10 times the data throughput
- Minimum network latency
- True future proofing for tomorrow's network applications
- Quicker installation due to innovative design
- Covered by the TrueNet® System Warranty*

TECHNICAL DATA



Ordering Information

Description	Catalogue number
CopperTen™ UTP Jack	6830 1 885-04
CopperTen™ UTP Double Outlet	6540 1 822-11
CopperTen™ UTP Quad Outlet	6540 1 822-12
CopperTen™ Jack Termination Tool	6830 1 490-00

Technical Specifications

Electrical Data

Insulation Resistance at +60°C and 93% RH	≥ 1GΩ
Dielectric Strength	Contact / contact ≥ 1.0kV DC Contact / shield ≥ 1.0kV DC
Current Carrying Capacity	≥ 1A
Typical Plug / Jack Contact Resistance	≤ 20mΩ
Typical IDC Contact Resistance	≤ 5mΩ
Conductor Terminations of LSA-PLUS® Contacts	≥ 200
Conductor Diameter	0.5-0.65mm (AWG 24-22)
Insulation Diameter	0.7-1.6mm

Mechanical Data

Plug / Jack Mating Cycles	≥ 750 (IEC/EN 60603-7)
Plug / Jack Insertion / Withdrawl Force	≤ 20N (IEC/EN 60603-7)
Operating Temperature Range	-10°C to +60°C
Operating Humidity Range	≤ 95% R.H. Non Condensing
Category 6 _A	ISO/IEC 11801:2002 Amendment 1 (channel) ISO/IEC 11801:2002 Amendment 2 (draft, permanent link & components) TIA-568-B.2-10 (channel, permanent link & components) EN 50173-1:2007

TECHNICAL DATA

*Terms & conditions apply

Tyco Electronics Ltd.
Rheinstrasse 20
CH-8200 Schaffhausen
Switzerland
Tel: +41 (0)52 633 66 61

www.tycoelectronics.com

Tyco Electronics
All rights reserved
102592BE 2/11 Revision © 2011

ADC KRONE, TE (logo) and Tyco Electronics are trademarks of the Tyco Electronics group of companies and its licensors.

While Tyco Electronics has made every reasonable effort to ensure the accuracy of the information in this document, Tyco Electronics does not guarantee that it is error-free, nor does Tyco Electronics make any other representation, warranty or guarantee that the information is accurate, correct, reliable or current. Tyco Electronics reserves the right to make any adjustments to the information contained herein at any time without notice. Tyco Electronics expressly disclaims all implied warranties regarding the information contained herein, including, but not limited to, any implied warranties of merchantability or fitness for a particular purpose. The dimensions in this document are for reference purposes only and are subject to change without notice. Specifications are subject to change without notice. Consult Tyco Electronics for the latest dimensions and design specifications.