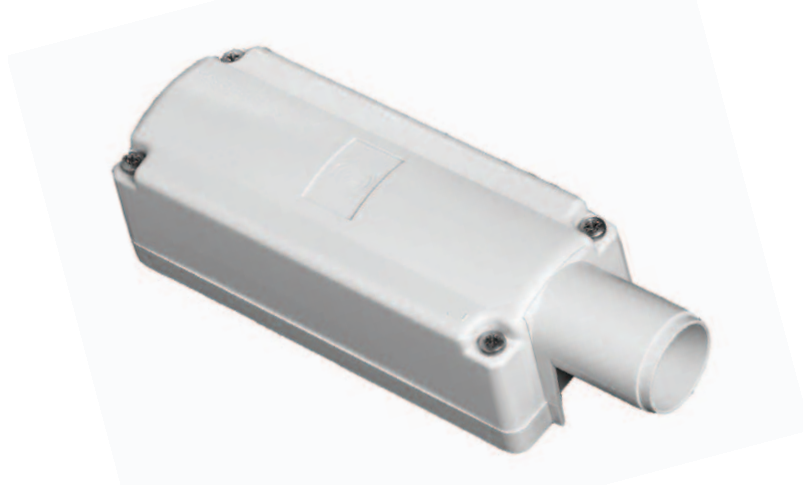


TrueNet®

Blown Fibre Gas Seal Unit



Blown Fibre Gas Seal Unit

The Gas Seal Unit is used in business or residential premises. This is a wall mounted unit that is positioned internally at the cable entry point. Incoming external tubing is converted to internal distribution tubing using gas sealing connectors. These connectors are used to seal both populated (with blown fibre unit) and unpopulated tubing. The gas seal unit is used for internally fed cable or with an customer lead in for cables entering through the fabric of the wall.

Features

- Compact, low profile, wall mounted unit used in business or residential premises
- Removable cover for easy access
- Unit manufactured from fire resistant material to UL94-V0
- Kit supplied with components to mount the unit to a wall and secure external cable

- Gas sealing connectors used to provide connection of external and internal tubing. Connectors provide gas tight seal for populated (with blown fibre unit) and unpopulated tubes. Gas seal connectors are supplied separately (refer to Tubing Accessories data sheet)
- Gas tight sealing caps used to terminate unused external cable tubes. Gas sealing caps are supplied separately (refer to Tubing Accessories data sheet)
- Accommodates 1, 7 tube external cable, and up to 2 Internal distribution cables (e.g. 2 x 4 tube internal cables or other combinations up to a maximum of 7 tubes. Any additional tubes will be spares)
- For internally fed cables, a quick set resin (supplied) is used to seal the cable interstices from the ingress of water or gas
- For external cables fed via the wall fabric, an interface to an internal customer lead in is provided.
- Remote toning point is provided for connection to metallic moisture barrier of the external cable.

TECHNICAL DATA

Ordering Information

Description	Catalogue Number
Blown Fibre Gas Seal Unit	7032 1 400-86

Technical Data

Maximum capacity

External cable	One 7 tube cable
Internal cable	Two cables to a maximum of 7 tubes
Required space envelope (mm)	(w) 80 x (d) 65 x (h) 235
Operating temperature	-20°C to + 50°C (5 to 95% RH)
Material	FR ABS
Colour	Light grey
Flammability rating	UL94-V0

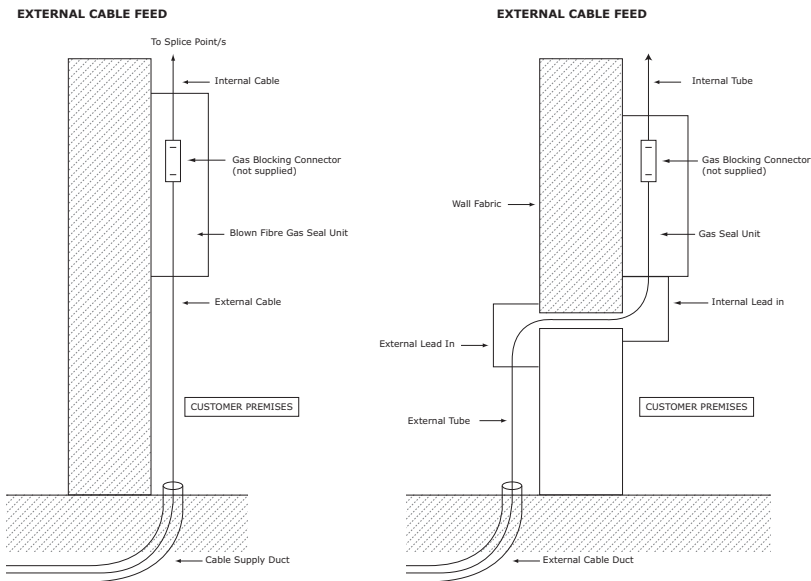
Testing

Dry heat	BS EN 60068-2-2 Test Bb
Damp heat	IEC 68-2-3
Change of temperature	IEC 68-2-14

Specifications

Packing Dimensions (mm):	(w) 320 x (d) 120 x (h) 90
Packed Weight (kg):	0.68
Net weight (kg):	0.63

Application Information



The Gas Seal Unit is supplied with wall fixings, wall fixing template, toning connector and sealing resin.
NOTE: Gas Seal Connectors and Tube Sealing Caps are not supplied (refer to Tubing Accessories Data Sheet).

TECHNICAL DATA



KRONE



Web Site: www.adckrone.com

ADC Communications (UK) Limited. Runnings Road, Kingsditch Trading Estate, Cheltenham, Gloucestershire, GL51 9NQ United Kingdom • Phone: +44 (0) 1242 264 400 Fax: +44 (0) 1242 264 488 contactuk@adckrone.com

EMEA Headquarters:

ADC GmbH, Beeskowdamm, 3-11, 14167 Berlin, Germany • Phone: +49 308 453 1818 Fax: +49 30 8453-1703. For a listing of all ADC KRONE's global sales office locations, please refer to our web site.

Specifications published here are current as of the date of publication of this document. Because we are continuously improving our products, ADC KRONE reserves the right to change specifications without prior notice. At any time, you may verify product specifications by contacting ADC GmbH headquarters in Berlin. ADC Telecommunications, Inc. views its patent portfolio as an important corporate asset and vigorously enforces its patents.

Part Number 101729BE Jan 06 Original © 2006 ADC Communications (UK) Ltd. All Rights Reserved